

HUSHTEC®

CLEARPLAY TRANSPARENT SOUND PANELS

HUSHTEC Newly designed **ClearPlay 360TM** sound panels is a game changer for Pickleball noise mitigation. Designed with Hushtec's Premium Series sound absorption panels combined with transparent panels provides a modern design option to closed in courts with no visibility. **Clearplay 360TM** panels allow light to pass through reducing ground shadows as the sun sets in the afternoon.

ClearPlay 360TM is perfect for tournament days allowing the audience to cheer on their teammates, family and friends without being isolated from solid color panels in addition to being in the court and getting in the way of the players.



Acoustic Specifications: RW23, STC23



100% Customizable, any shape, size and color



Weatherproof, for outdoor & indoor use



Velcro connected for minimal noise leakage



Tensioned Eyelets for added install points



Fully Customisable sizes, colour, and branding



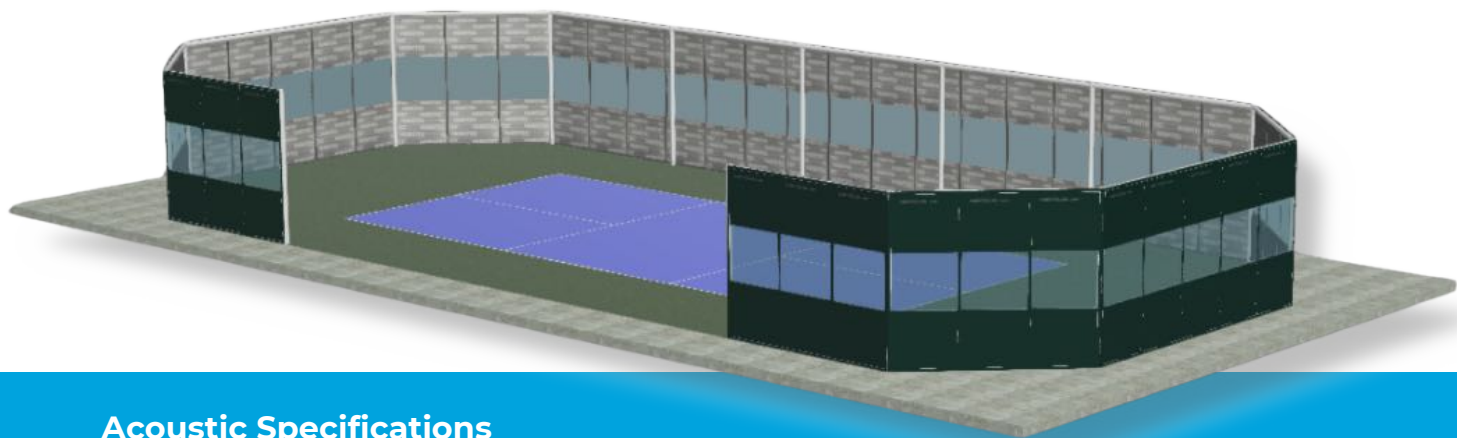
Why ClearPlay 360



Transparent Sound Panels

- **Unparalleled Visibility:** ClearPlay allows natural light to pass through, providing optimal visibility through chain link fences. This is particularly beneficial for sports enthusiasts who want to watch their favorite players in action.
- **Safety:** The transparent panels enable critical moments to be saved as they allow for easy visibility, potentially aiding first responders during emergencies.
- **Enhanced Entertainment Experience:** ClearPlay enhances the viewing experience for spectators, allowing them to cheer on their favorite players without being isolated from the action.

Specifications of ClearPlay 360™



Acoustic Specifications

- **High Performance:** ClearPlay panels offer an ***RW23 and STC23 acoustic rating***, ensuring effective sound absorption and noise reduction.
- **Weatherproof:** Designed for both outdoor and indoor use, ClearPlay panels are built to withstand various environmental conditions.

Customizability

- **Tailored Solutions:** ClearPlay Transparent Noise panels are available in standard size dimensions or custom sizes, providing flexibility to meet specific requirements.
- **Custom Colors and Graphics:** Panels can be tailored to match specific color schemes and branding, adding a personalized touch to the installation.



- **Full Customization Options:** Any size, color, and logo branding available



HUSHTEC[®]

Your global leader in the development and manufacturing of noise control solutions and technologies.

[hushtecsolutions.com](https://www.hushtecsolutions.com)